

SCHOOLSET

benefits and play ideas



Just Blocks SCHOOLSET is an educational material which aims to inspire children to creative play and can significantly enrich the curriculum at schools and kindergartens.

The blocks have a modern design and architectural features which encourage to plan, build and support spatial imagination at every stage of a child's development.

Each play differs and each building is very unique



They are in line with various **educational approaches** such as: Montessori, Waldorf, Reggio Emilia, STEAM and traditional education

They are attractive to all children, at **different ages** and development stages



They are dedicated for both **open-ended play** which encourages children to experiment and **constructive play** focused on a particular final result

They teach **group work**, sharing resources, problem solving, making choices and taking decisions



They **support imagination** through play without additional sound or light effects, exercise mimic, voice and correct articulation

They support **independence** and building self-esteem and confidence in being one of a kind

They exercise **fine and gross motor skills**, engaging all body muscles

They are a useful material to help with **sensory stimulation**

They help children to name and understand **emotions** and coping with them

Inspire both girls and boys to play – they are **gender neutral**

They help children to
complete projects,
introduce constructive
changes and taking
conclusions

They promote **hand-eye
coordination** and brain
development



They are natural product and
kids have an opportunity to
smell, touch and play with
sustainable wood

Produced in EU using high
quality materials and
laboratory tested, in
compliance with the **highest
toy standards**



Greatly support 'no planet B' philosophy.

Our aim is to sensitise children to the beauty of nature
so that one day they can protect it.

EXAMPLES OF CLASSES



ARCHITECTURE



HISTORY



SCIENCE



URBAN DESIGN

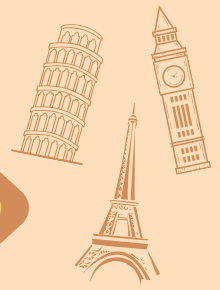


FREE PLAY



ARCHITECTURE

SUBJECT: FAMOUS TOWERS



BIG BEN

where: London/ UK

height: 96.3m

stairs: 334

premises: 1200



EIFFEL TOWER

where: Paris/ France

height: 330m

completed: 1889

material: steel



where: Pisa/ Italy

height: 54.98m

deviation: 5m

material: white marble

TOWER OF PISA



TASK Divide the children into three groups. Each group has to build a different famous tower and label its height.



Children should take initiative to decide if they would like their towers to be coloured or not and adjust the tower's design according to their preferences.

HISTORY

SUBJECT: COLOSSEUM



Where: **Ancient Rome**

When: 70-72 to 80

The author: emperors
Vespasian and Titus

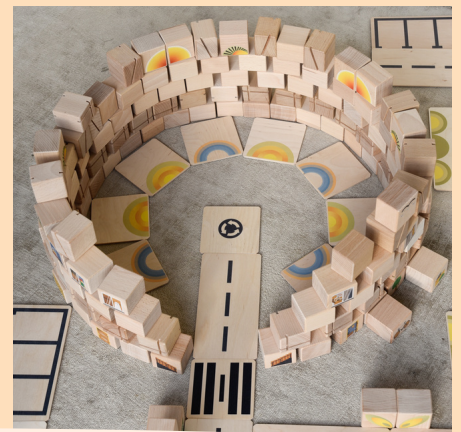
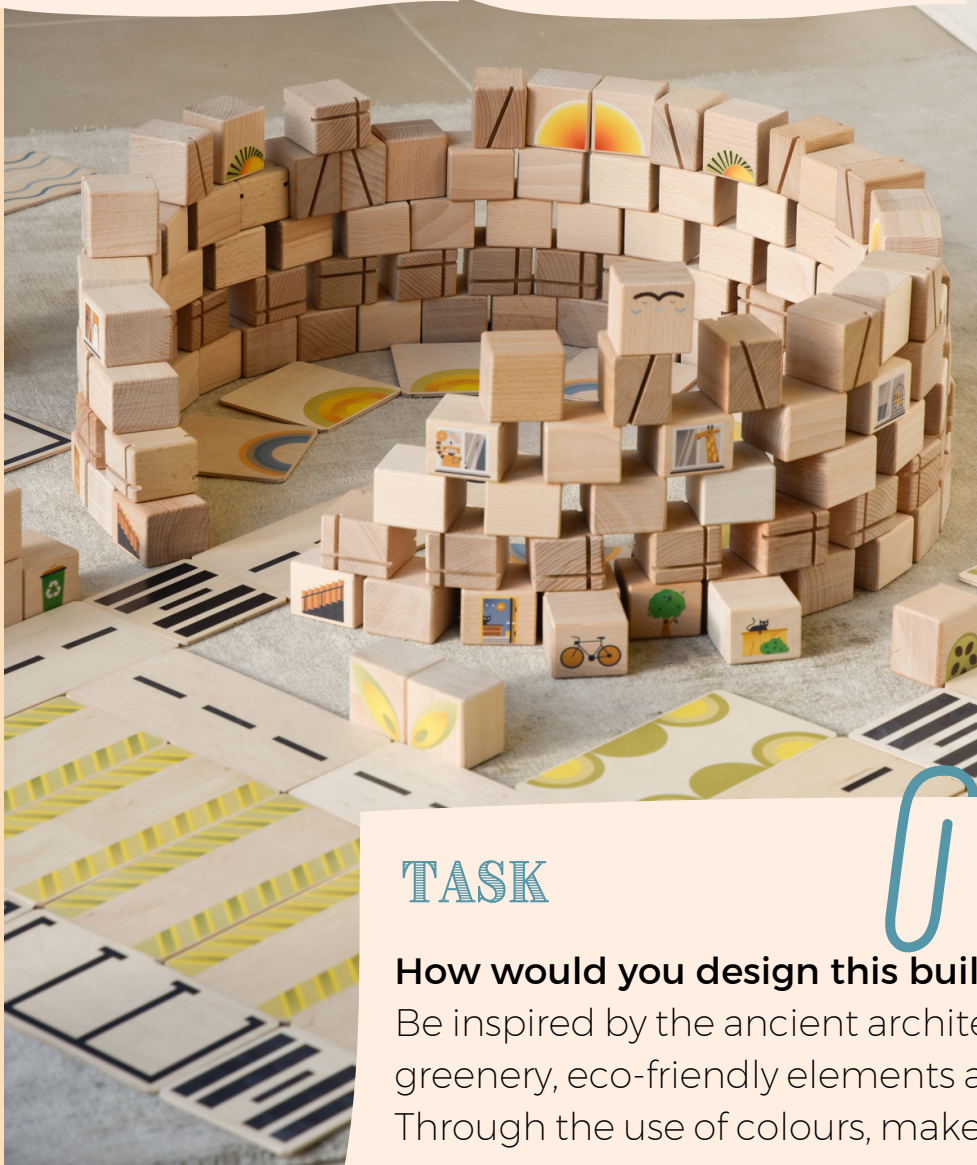
height 48.5m

circumference 524m

- underground
corridor system

Purpose:

- amphitheatre
- shows and games
- gladiatorial combat
- hunting
- castle



TASK

How would you design this building today?

Be inspired by the ancient architecture, remember about greenery, eco-friendly elements and the inhabitants. Through the use of colours, make the building even more attractive.



SCIENCE

SUBJECT:

ANIMALS



a snake



a crocodile



What it is?



TASK

Match the animals to the continents on which they live.

Choose and build animal, then find 5 interesting facts about it and present them to the class.



URBAN DESIGN

SUBJECT: ROAD SAFETY



TASK

Build the town together and plan signage.

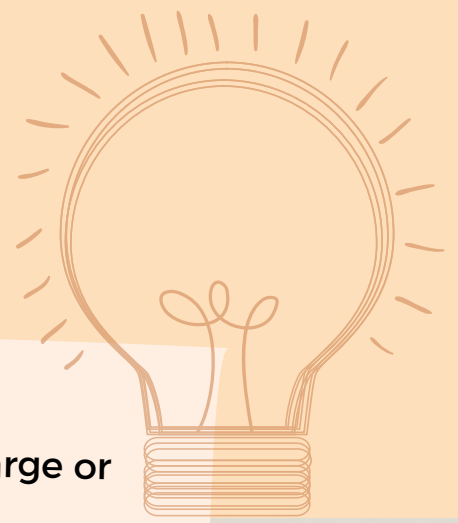



Ask the children to make traffic signs out of cardboard and place them on the construction. Explain the rules of traffic and road safety.



FREE PLAY

SUBJECT: IMAGINATION



Let children take the lead,  without taking charge or setting goals!

- allow children to discover things for themselves
- instead of instructing them observe them being lost in the activity, exploring and experimenting



SCHOOLSET



Designed to make education more child-friendly with the needs, interests and safety of children in mind!

BIG 264 elements



15kg

MEDIUM 148 elements



7,5kg

The set contains:

- Cubes (5x5x4cm)
- Flat large blocks (20x10cm)
- Flat medium blocks (10x10cm)
- Sticks (1x1x4cm)

Material: beech wood
and plywood
Cardboard packaging
Dedicated for kids 3+
Complies with EN-71
and ASTM F963-17

JUST
BLOCKS

